

An aerial photograph of a sandy beach with several palm trees. The trees are scattered across the frame, with their long shadows cast across the sand. The bottom half of the image transitions into a clear, turquoise blue ocean. The overall scene is bright and tropical.

# CALA

SAHL HASHEESH

*Floor Plans*



*Discover a world of tranquillity  
and luxury at CALA*

## *Unit Offering*

Our homes are designed to exceed expectations, offering a seamless transition into luxurious living.

Each unit comes complete with meticulously installed kitchen cabinets, wardrobes, and air conditioners, ensuring every detail is taken care of. Additionally, each unit boasts a stunning view from the terrace, providing a perfect spot to relax and enjoy the surroundings.

Moreover, enjoy added peace of mind with a comprehensive security CCTV system and access to Triple Play Communication services. Plus, with dedicated parking spots, convenience is always at your doorstep.

Experience the epitome of modern living with The CALA fully equipped homes.

### Building Types

- Type A
- Type A1
- Type B
- Type B1
- Type C
- Type C1
- Type E
- Type E1
- Type Em
- Type E1m
- Type F
- Type G
- Type H
- Type Gm
- Club House



### Building Numbers

- Studio
- One Bedroom
- Two Bedroom
- Three Bedroom



# Type A - Ground floor

**Unit G1 - Two bedroom**

**Area 115.6 m<sup>2</sup>**

**Garden 18.3 m<sup>2</sup>**

**Unit G2 - Two bedroom**

**Area 112.7 m<sup>2</sup>**

**Garden 39 m<sup>2</sup>**

**Unit G3 - Two bedroom**

**Area 112.8 m<sup>2</sup>**

**Garden 39 m<sup>2</sup>**

**Unit G4 - Two bedroom**

**Area 112.2 m<sup>2</sup>**

**Garden 20.9 m<sup>2</sup>**



## DISCLAIMER

All render and visual materials are for illustrative purpose only. actual areas may vary from the stated figures. All dimensions are measured to structural elements. Capital Link reserved the right to make minor modifications without prior notice. Unit floor plan might be mirrored according to its location in the layout.



# Type A - First floor

## Unit F1 - Two bedroom

Area 115.6 m<sup>2</sup>

## Unit F2 - Two bedroom

Area 115.6 m<sup>2</sup>

## Unit F3 - Two bedroom

Area 115.7 m<sup>2</sup>

## Unit F4 - Two bedroom

Area 112.2 m<sup>2</sup>

### DISCLAIMER

All render and visual materials are for illustrative purpose only. actual areas may vary from the stated figures. All dimensions are measured to structural elements. Capital Link reserved the right to make minor modifications without prior notice. Unit floor plan might be mirrored according to its location in the layout.



# Type A - Second floor

## Unit P1 - Two bedroom

Area 121.7 m<sup>2</sup>

Roof Terrace 51.6 m<sup>2</sup>

## Unit P2 - Two bedroom

Area 125.6 m<sup>2</sup>

Roof Terrace 70.3 m<sup>2</sup>

## Unit S3 - Two bedroom

Area 113 m<sup>2</sup>

## Unit P4 - Two bedroom

Area 121.8 m<sup>2</sup>

Roof Terrace 81.9 m<sup>2</sup>

### DISCLAIMER

All render and visual materials are for illustrative purpose only. actual areas may vary from the stated figures. All dimensions are measured to structural elements. Capital Link reserved the right to make minor modifications without prior notice. Unit floor plan might be mirrored according to its location in the layout.



# Type A - Roof floor

## Type A - Summary

**No. of floors : 3**

- Ground Floor
- First Floor
- second Floor

**No. of units: 4 per floor**

**Unit type: two bedroom**

**Unit area: 112 m<sup>2</sup> to 116 m<sup>2</sup>**

**Penthouse area: 121 m<sup>2</sup> to 125 m<sup>2</sup>**

### DISCLAIMER

All render and visual materials are for illustrative purpose only. actual areas may vary from the stated figures. All dimensions are measured to structural elements. Capital Link reserved the right to make minor modifications without prior notice. Unit floor plan might be mirrored according to its location in the layout.



# Type A1 - Garden floor

## Unit GA1 - Two bedroom

Area 115.6 m<sup>2</sup>

Garden 19.1 m<sup>2</sup>

English Court 21.6 m<sup>2</sup>

## Unit GA2 - Two bedroom

Area 112.7 m<sup>2</sup>

Garden 40.8 m<sup>2</sup>

## Unit GA3 - Two bedroom

Area 112.8 m<sup>2</sup>

Garden 41.0 m<sup>2</sup>

## Unit GA4 - Two bedroom

Area 112.1 m<sup>2</sup>

Garden 21.5 m<sup>2</sup>

English Court 21.6 m<sup>2</sup>



### DISCLAIMER

All render and visual materials are for illustrative purpose only. actual areas may vary from the stated figures. All dimensions are measured to structural elements. Capital Link reserved the right to make minor modifications without prior notice. Unit floor plan might be mirrored according to its location in the layout.





# Type A1 - Entrance floor

## Unit E1 - Two bedroom

Area 115.6 m<sup>2</sup>

## Unit E2 - Two bedroom

Area 117.8 m<sup>2</sup>

## Unit E3 - Two bedroom

Area 118.2 m<sup>2</sup>

## Unit E4 - Two bedroom

Area 119.6 m<sup>2</sup>

### DISCLAIMER

All render and visual materials are for illustrative purpose only. actual areas may vary from the stated figures. All dimensions are measured to structural elements. Capital Link reserved the right to make minor modifications without prior notice. Unit floor plan might be mirrored according to its location in the layout.



# Type A1 - First floor

## Unit F1 - Two bedroom

Area 115.6 m<sup>2</sup>

## Unit F2 - Two bedroom

Area 122.9 m<sup>2</sup>

## Unit F3 - Two bedroom

Area 123 m<sup>2</sup>

## Unit F4 - Two bedroom

Area 112.1 m<sup>2</sup>

### DISCLAIMER

All render and visual materials are for illustrative purpose only. actual areas may vary from the stated figures. All dimensions are measured to structural elements. Capital Link reserved the right to make minor modifications without prior notice. Unit floor plan might be mirrored according to its location in the layout.



# Type A1 - Second floor

## Unit P1 - Two bedroom

Area 121.7 m<sup>2</sup>

Roof Terrace 45.4 m<sup>2</sup>

## Unit P2 - Two bedroom

Area 125.5 m<sup>2</sup>

Roof Terrace 70.3 m<sup>2</sup>

## Unit S3 - Two bedroom

Area 113 m<sup>2</sup>

## Unit P4 - Two bedroom

Area 121.8 m<sup>2</sup>

Roof Terrace 75.7 m<sup>2</sup>

### DISCLAIMER

All render and visual materials are for illustrative purpose only. actual areas may vary from the stated figures. All dimensions are measured to structural elements. Capital Link reserved the right to make minor modifications without prior notice. Unit floor plan might be mirrored according to its location in the layout.



# Type A1 - Roof floor

## Type A1 - Summary

### No. of floors : 4

- Garden Floor
- Entrance Floor
- First Floor
- second Floor

### No. of units: 4 per floor

### Unit type: two bedroom

### Unit area: 112 m<sup>2</sup> to 123 m<sup>2</sup>

### Penthouse area: 121 m<sup>2</sup> to 126 m<sup>2</sup>

### DISCLAIMER

All render and visual materials are for illustrative purpose only. actual areas may vary from the stated figures. All dimensions are measured to structural elements. Capital Link reserved the right to make minor modifications without prior notice. Unit floor plan might be mirrored according to its location in the layout.



# Type B - Ground floor

**Unit G1 - One bedroom**

**Area: 80.87 m<sup>2</sup>**

**Garden: 19.95 m<sup>2</sup>**

**Unit G2 - One bedroom**

**Area: 80.00 m<sup>2</sup>**

**Garden: 32.21 m<sup>2</sup>**

**Unit G3 - One bedroom**

**Area: 81.81 m<sup>2</sup>**

**Garden: 34.81 m<sup>2</sup>**

**Unit G4 - Studio**

**Area: 58.52 m<sup>2</sup>**

**Garden: 11.55 m<sup>2</sup>**

**Unit G5 - One bedroom**

**Area: 81.64 m<sup>2</sup>**

**Garden: 18.93 m<sup>2</sup>**



## DISCLAIMER

All render and visual materials are for illustrative purpose only. actual areas may vary from the stated figures. All dimensions are measured to structural elements. Capital Link reserved the right to make minor modifications without prior notice. Unit floor plan might be mirrored according to its location in the layout.



# Type B - First floor

## Unit F1 - One bedroom

Area: 80.87 m<sup>2</sup>

## Unit F2 - One bedroom

Area: 80.00 m<sup>2</sup>

## Unit F3 - One bedroom

Area: 81.81 m<sup>2</sup>

## Unit F4 - Studio

Area: 58.52 m<sup>2</sup>

## Unit F5 - One bedroom

Area: 81.64 m<sup>2</sup>

### DISCLAIMER

All render and visual materials are for illustrative purpose only. actual areas may vary from the stated figures. All dimensions are measured to structural elements. Capital Link reserved the right to make minor modifications without prior notice. Unit floor plan might be mirrored according to its location in the layout.



# Type B - Second floor

## Unit P1 - One bedroom

Area: 83.90 m<sup>2</sup>.

Roof: 66.66 m<sup>2</sup>.

## Unit S2 - One bedroom

Area: 80.70 m<sup>2</sup>.

## Unit P3 - One bedroom

Area: 94.68 m<sup>2</sup>.

Roof: 47.51 m<sup>2</sup>.

## Unit S4 - Studio

Area: 53.50 m<sup>2</sup>.

## Unit P5 - One bedroom

Area: 89.50 m<sup>2</sup>.

Roof: 57.81 m<sup>2</sup>.

### DISCLAIMER

All render and visual materials are for illustrative purpose only. actual areas may vary from the stated figures. All dimensions are measured to structural elements. Capital Link reserved the right to make minor modifications without prior notice. Unit floor plan might be mirrored according to its location in the layout.



# Type B - Roof floor

## Type B - Summary

### No. of floors : 3

- Ground Floor
- First Floor
- second Floor

### No. of units: 5 per floor

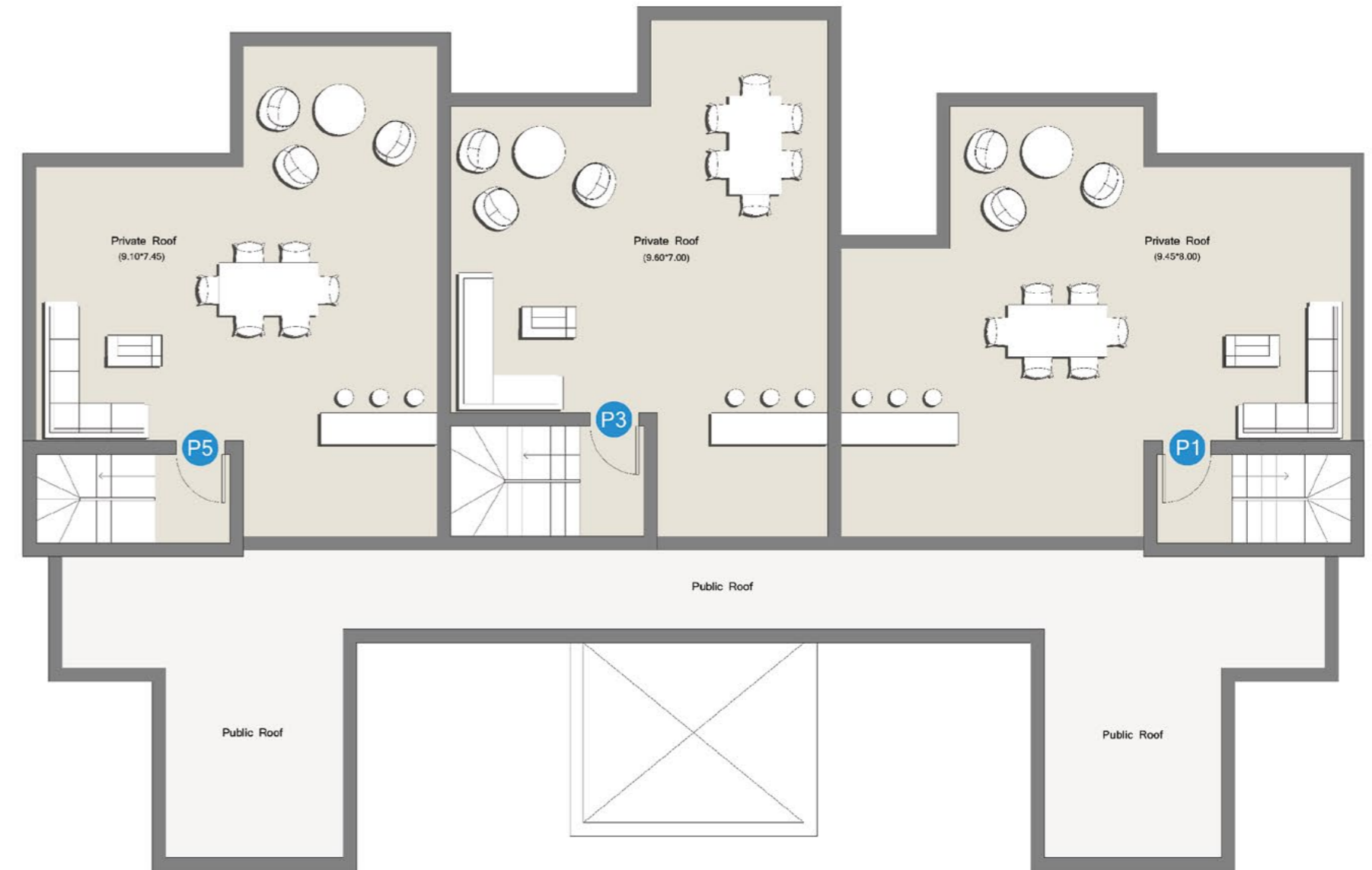
Unit type: Studio & One bedroom

Unit area: 58 m<sup>2</sup> to 82 m<sup>2</sup>

Penthouse area: 84 m<sup>2</sup> to 95 m<sup>2</sup>

### DISCLAIMER

All render and visual materials are for illustrative purpose only. actual areas may vary from the stated figures. All dimensions are measured to structural elements. Capital Link reserved the right to make minor modifications without prior notice. Unit floor plan might be mirrored according to its location in the layout.





# Type B1 - Garden floor

**Unit GA1 - One bedroom**

**Area: 84.70m<sup>2</sup>.**

**Garden: 18.01 m<sup>2</sup>.**

**English Court: 7.6 m<sup>2</sup>.**

**Unit GA2 - One bedroom**

**Area: 80.00 m<sup>2</sup>.**

**Garden: 33.50 m<sup>2</sup>.**

**Unit GA3 - One bedroom**

**Area: 97.70 m<sup>2</sup>.**

**Garden: 24.72 m<sup>2</sup>.**

**Unit GA4 - Studio**

**Area: 55.83 m<sup>2</sup>.**

**Garden: 14.44 m<sup>2</sup>.**

**Unit GA5 - One bedroom**

**Area: 78.26 m<sup>2</sup>.**

**Garden: 22.72 m<sup>2</sup>.**

**English Court: 7.6 m<sup>2</sup>.**



## DISCLAIMER

All render and visual materials are for illustrative purpose only. actual areas may vary from the stated figures. All dimensions are measured to structural elements. Capital Link reserved the right to make minor modifications without prior notice. Unit floor plan might be mirrored according to its location in the layout.



# Type B1 - Entrance floor

## Unit E1 - One bedroom

Area: 84.65 m<sup>2</sup>.

## Unit E2 - One bedroom

Area: 80.00 m<sup>2</sup>.

## Unit E3 - One bedroom

Area: 97.70 m<sup>2</sup>.

## Unit E4 - Studio

Area: 55.83 m<sup>2</sup>.

## Unit E5 - One bedroom

Area: 78.26 m<sup>2</sup>.

### DISCLAIMER

All render and visual materials are for illustrative purpose only. actual areas may vary from the stated figures. All dimensions are measured to structural elements. Capital Link reserved the right to make minor modifications without prior notice. Unit floor plan might be mirrored according to its location in the layout.



# Type B1 - First floor

## Unit F1 - One bedroom

Area: 74.59 m<sup>2</sup>.

## Unit F2 - One bedroom

Area: 82.54 m<sup>2</sup>.

## Unit F3 - One bedroom

Area: 88.13 m<sup>2</sup>.

## Unit F4 - Studio

Area: 58.39 m<sup>2</sup>.

## Unit F5 - One bedroom

Area: 78.28 m<sup>2</sup>.

### DISCLAIMER

All render and visual materials are for illustrative purpose only. actual areas may vary from the stated figures. All dimensions are measured to structural elements. Capital Link reserved the right to make minor modifications without prior notice. Unit floor plan might be mirrored according to its location in the layout.



# Type B1 - Second floor

## Unit P1 - One bedroom

Area: 85.81 m<sup>2</sup>.

Roof: 66.66 m<sup>2</sup>.

## Unit S2 - One bedroom

Area: 80.30 m<sup>2</sup>.

## Unit P3 - One bedroom

Area: 95.80 m<sup>2</sup>.

Roof: 47.51 m<sup>2</sup>.

## Unit S4 - Studio

Area: 56.20 m<sup>2</sup>.

## Unit P5 - One bedroom

Area: 87.90 m<sup>2</sup>.

Roof: 57.81 m<sup>2</sup>.

### DISCLAIMER

All render and visual materials are for illustrative purpose only. actual areas may vary from the stated figures. All dimensions are measured to structural elements. Capital Link reserved the right to make minor modifications without prior notice. Unit floor plan might be mirrored according to its location in the layout.



# Type B1 - Roof floor

## Type B1 - Summary

### No. of floors : 4

- Garden Floor
- Entrance Floor
- First Floor
- second Floor

### No. of units: 5 per floor

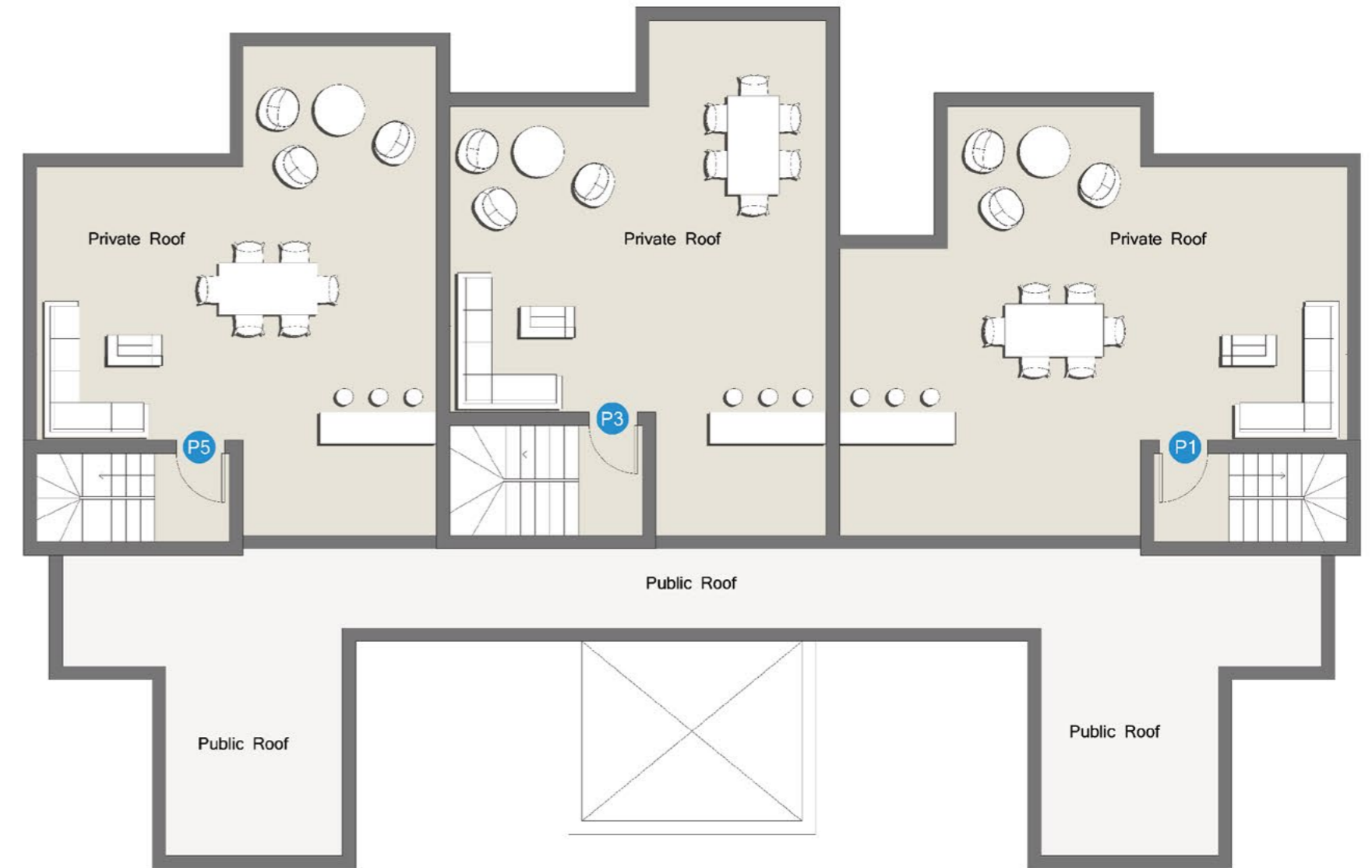
### Unit type: Studio & One bedroom

Unit area: 55 m<sup>2</sup> to 98 m<sup>2</sup>

Penthouse area: 85 m<sup>2</sup> to 95 m<sup>2</sup>

### DISCLAIMER

All render and visual materials are for illustrative purpose only. actual areas may vary from the stated figures. All dimensions are mesured to structural elements. Capital Link reserved the right to make minor modifications without prior notice. Unit floor plan might be mirrored according to its location in the layout.



# Type C - Ground floor

**Unit G1 - Three bedroom**

**Area 150.8 m<sup>2</sup>**

**Garden 46.5 m<sup>2</sup>**

**Unit G2 - Three bedroom**

**Area 149.9 m<sup>2</sup>**

**Garden 47.2 m<sup>2</sup>**



## DISCLAIMER

All render and visual materials are for illustrative purpose only. actual areas may vary from the stated figures. All dimensions are measured to structural elements. Capital Link reserved the right to make minor modifications without prior notice. Unit floor plan might be mirrored according to its location in the layout.



# Type C - First floor

## Unit F1 - Three bedroom

Area 150.8 m<sup>2</sup>

## Unit F2 - Three bedroom

Area 149.9 m<sup>2</sup>

### DISCLAIMER

All render and visual materials are for illustrative purpose only. actual areas may vary from the stated figures. All dimensions are measured to structural elements. Capital Link reserved the right to make minor modifications without prior notice. Unit floor plan might be mirrored according to its location in the layout.



# Type C - Second floor

## Unit P1 - Three bedroom

Area 155.6 m<sup>2</sup>

Roof terrace 92 m<sup>2</sup>

## Unit P2 - Two bedroom

Area 150.6 m<sup>2</sup>

Roof terrace 92 m<sup>2</sup>

### DISCLAIMER

All render and visual materials are for illustrative purpose only. actual areas may vary from the stated figures. All dimensions are measured to structural elements. Capital Link reserved the right to make minor modifications without prior notice. Unit floor plan might be mirrored according to its location in the layout.





# Type C - Roof floor

## Type C - Summary

**No. of floors : 3**

- Ground Floor
- First Floor
- second Floor

**No. of units: 2 per floor**

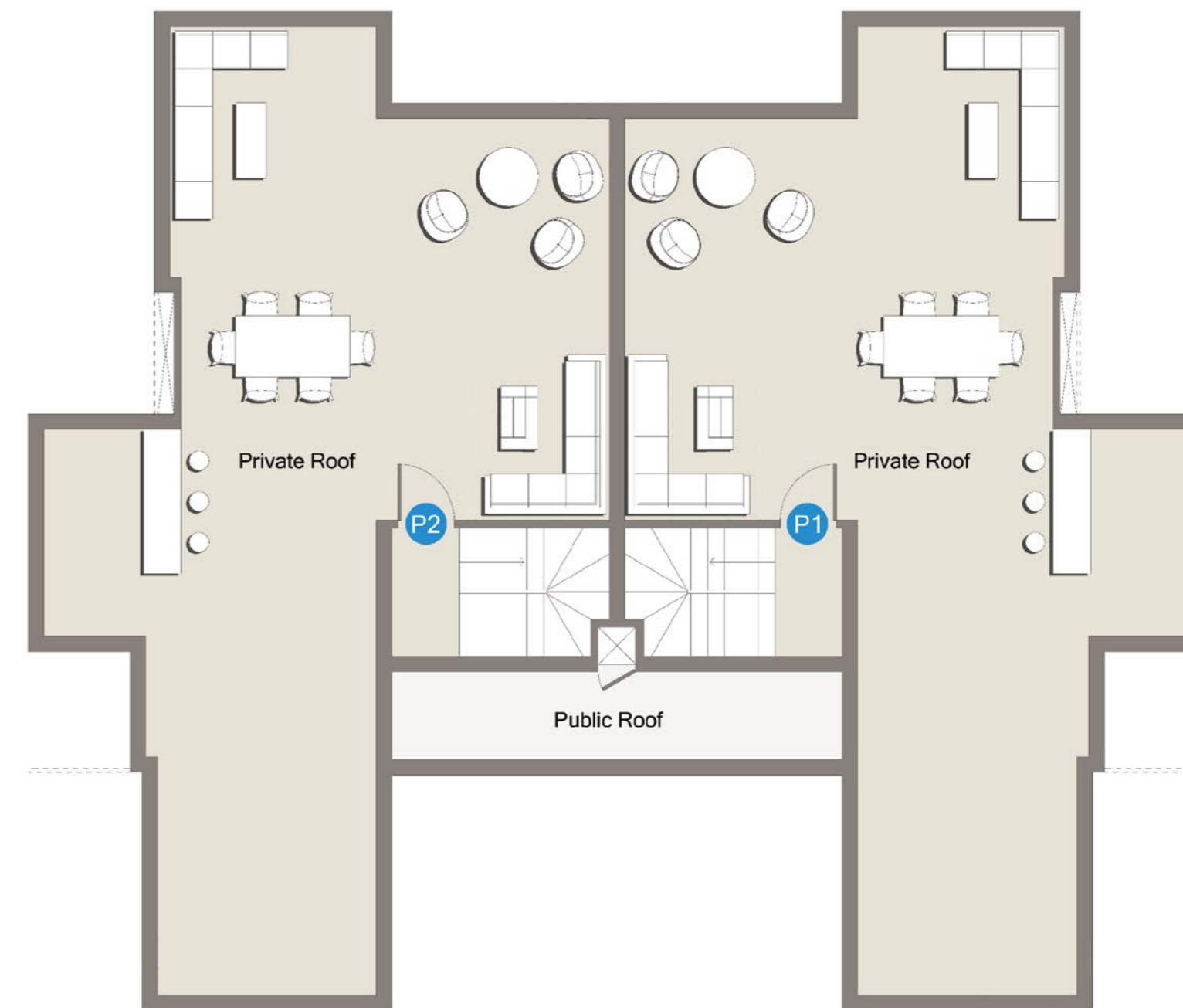
**Unit type: Three bedroom**

**Unit area: 150 m<sup>2</sup> to 151 m<sup>2</sup>**

**Penthouse area: 151 m<sup>2</sup> to 156 m<sup>2</sup>**

### DISCLAIMER

All render and visual materials are for illustrative purpose only. actual areas may vary from the stated figures. All dimensions are measured to structural elements. Capital Link reserved the right to make minor modifications without prior notice. Unit floor plan might be mirrored according to its location in the layout.



# Type E- Ground Floor

Unit G1 - Two bedroom  
Area 110.6 m<sup>2</sup>.  
Garden 31.8 m<sup>2</sup>.

Unit G2 - Two bedroom  
Area 115.9 m<sup>2</sup>.  
Garden 32.4 m<sup>2</sup>.



## DISCLAIMER

All render and visual materials are for illustrative purpose only. actual areas may vary from the stated figures. All dimensions are measured to structural elements. Capital Link reserved the right to make minor modifications without prior notice. Unit floor plan might be mirrored according to its location in the layout.



# Type E- First floor

**Unit F1 - Two bedroom**

**Area 110.6 m<sup>2</sup>**

**Unit F2 - Two bedroom**

**Area 115.9 m<sup>2</sup>**

## DISCLAIMER

All render and visual materials are for illustrative purpose only. actual areas may vary from the stated figures. All dimensions are measured to structural elements. Capital Link reserved the right to make minor modifications without prior notice. Unit floor plan might be mirrored according to its location in the layout.



# Type E- Second floor

**Unit P1 - Two bedroom**

**Area 122.6 m<sup>2</sup>**

**Roof terrace 70.8 m<sup>2</sup>**

**Unit P2 - Two bedroom**

**Area 127.9 m<sup>2</sup>**

**Roof terrace 80.4 m<sup>2</sup>**

## DISCLAIMER

All render and visual materials are for illustrative purpose only. actual areas may vary from the stated figures. All dimensions are mesured to structural elements. Capital Link reserved the right to make minor modifications without prior notice. Unit floor plan might be mirrored according to its location in the layout.



# Type E- Roof floor

## Type E- Summary

**No. of floors : 3**

- Ground Floor
- First Floor
- second Floor

**No. of units: 2 per floor**

**Unit type: Two bedroom**

**Unit area: 110 m<sup>2</sup> to 116 m<sup>2</sup>**

**Penthouse area: 122m<sup>2</sup> to 128m<sup>2</sup>**

### DISCLAIMER

All render and visual materials are for illustrative purpose only. actual areas may vary from the stated figures. All dimensions are measured to structural elements. Capital Link reserved the right to make minor modifications without prior notice. Unit floor plan might be mirrored according to its location in the layout.



# Type Em- Ground Floor

Unit G1 - Two bedroom  
Area 115.9 m<sup>2</sup>.  
Garden 32.4 m<sup>2</sup>.

Unit G2 - Two bedroom  
Area 110.6 m<sup>2</sup>.  
Garden 31.8 m<sup>2</sup>.



## DISCLAIMER

All render and visual materials are for illustrative purpose only. actual areas may vary from the stated figures. All dimensions are measured to structural elements. Capital Link reserved the right to make minor modifications without prior notice. Unit floor plan might be mirrored according to its location in the layout.



# Type Em- First floor

Unit F1 - Two bedroom

Area 115.9 m<sup>2</sup>

Unit F2 - Two bedroom

Area 110.6 m<sup>2</sup>

## DISCLAIMER

All render and visual materials are for illustrative purpose only. actual areas may vary from the stated figures. All dimensions are measured to structural elements. Capital Link reserved the right to make minor modifications without prior notice. Unit floor plan might be mirrored according to its location in the layout.



# Type Em- Second floor

**Unit P1 - Two bedroom**

**Area 127.9 m<sup>2</sup>**

**Roof terrace 80.4 m<sup>2</sup>**

**Unit P2 - Two bedroom**

**Area 122.6 m<sup>2</sup>**

**Roof terrace 70.8 m<sup>2</sup>**

## DISCLAIMER

All render and visual materials are for illustrative purpose only. actual areas may vary from the stated figures. All dimensions are measured to structural elements. Capital Link reserved the right to make minor modifications without prior notice. Unit floor plan might be mirrored according to its location in the layout.





# Type Em- Roof floor

## Type Em- Summary

**No. of floors : 3**

- Ground Floor
- First Floor
- second Floor

**No. of units: 2 per floor**

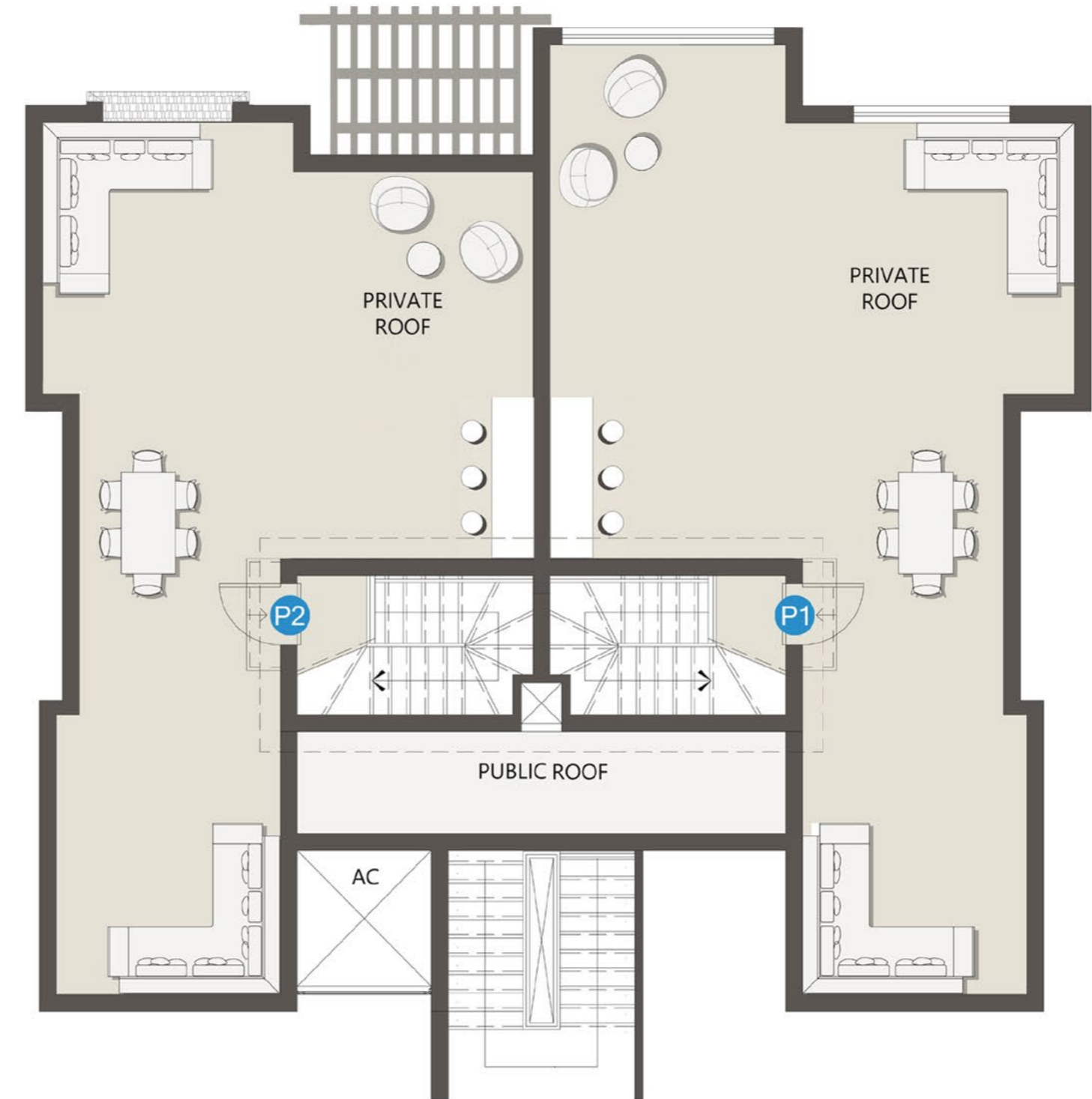
**Unit type: Two bedroom**

**Unit area: 110 m<sup>2</sup> to 116 m<sup>2</sup>**

**Penthouse area: 122m<sup>2</sup> to 128m<sup>2</sup>**

### DISCLAIMER

All render and visual materials are for illustrative purpose only. actual areas may vary from the stated figures. All dimensions are measured to structural elements. Capital Link reserved the right to make minor modifications without prior notice. Unit floor plan might be mirrored according to its location in the layout.



# Type F - First floor

**Unit F1 - One bedroom**

**Area: 82.69 m<sup>2</sup>**

**Unit F2 - Studio**

**Area: 56.72 m<sup>2</sup>**

**Unit F3 - Studio**

**Area: 59.60 m<sup>2</sup>**

**Unit F4 - Studio**

**Area: 55.37 m<sup>2</sup>**

**Unit F5 - One bedroom**

**Area: 82.68 m<sup>2</sup>**



## DISCLAIMER

All render and visual materials are for illustrative purpose only. actual areas may vary from the stated figures. All dimensions are measured to structural elements. Capital Link reserved the right to make minor modifications without prior notice. Unit floor plan might be mirrored according to its location in the layout.



# Type F - Second floor

## Unit P1 - One bedroom

Area: 87.34 m<sup>2</sup>

Roof: 77.92 m<sup>2</sup>

## Unit S2 - Studio

Area: 56.92 m<sup>2</sup>

## Unit S3 - Studio

Area: 59.60 m<sup>2</sup>

## Unit S4 - Studio

Area: 55.57 m<sup>2</sup>

## Unit P5 - One bedroom

Area: 87.43 m<sup>2</sup>

Roof: 77.92 m<sup>2</sup>

### DISCLAIMER

All render and visual materials are for illustrative purpose only. actual areas may vary from the stated figures. All dimensions are measured to structural elements. Capital Link reserved the right to make minor modifications without prior notice. Unit floor plan might be mirrored according to its location in the layout.



# Type F - Roof floor

## Type F - Summary

**No. of floors : 3**

- Entrance Floor
- First Floor
- second Floor

**No. of units: 5 per floor**

**Unit type: Studio & One bedroom**

**Unit area: 55 m<sup>2</sup> to 82 m<sup>2</sup>**

**Penthouse area: 87 m<sup>2</sup>**

### DISCLAIMER

All render and visual materials are for illustrative purpose only. actual areas may vary from the stated figures. All dimensions are measured to structural elements. Capital Link reserved the right to make minor modifications without prior notice. Unit floor plan might be mirrored according to its location in the layout.



# Type Gm-First Floor

**Unit F1 - One Bedroom**  
**Area: 86.5 m<sup>2</sup>**

**Unit F2 - Studio**  
**Area: 56.6m<sup>2</sup>.**

**Unit F3 - Studio**  
**Area: 59.1 m<sup>2</sup>**

**Unit F4 - Studio**  
**Area: 57.5 m<sup>2</sup>**

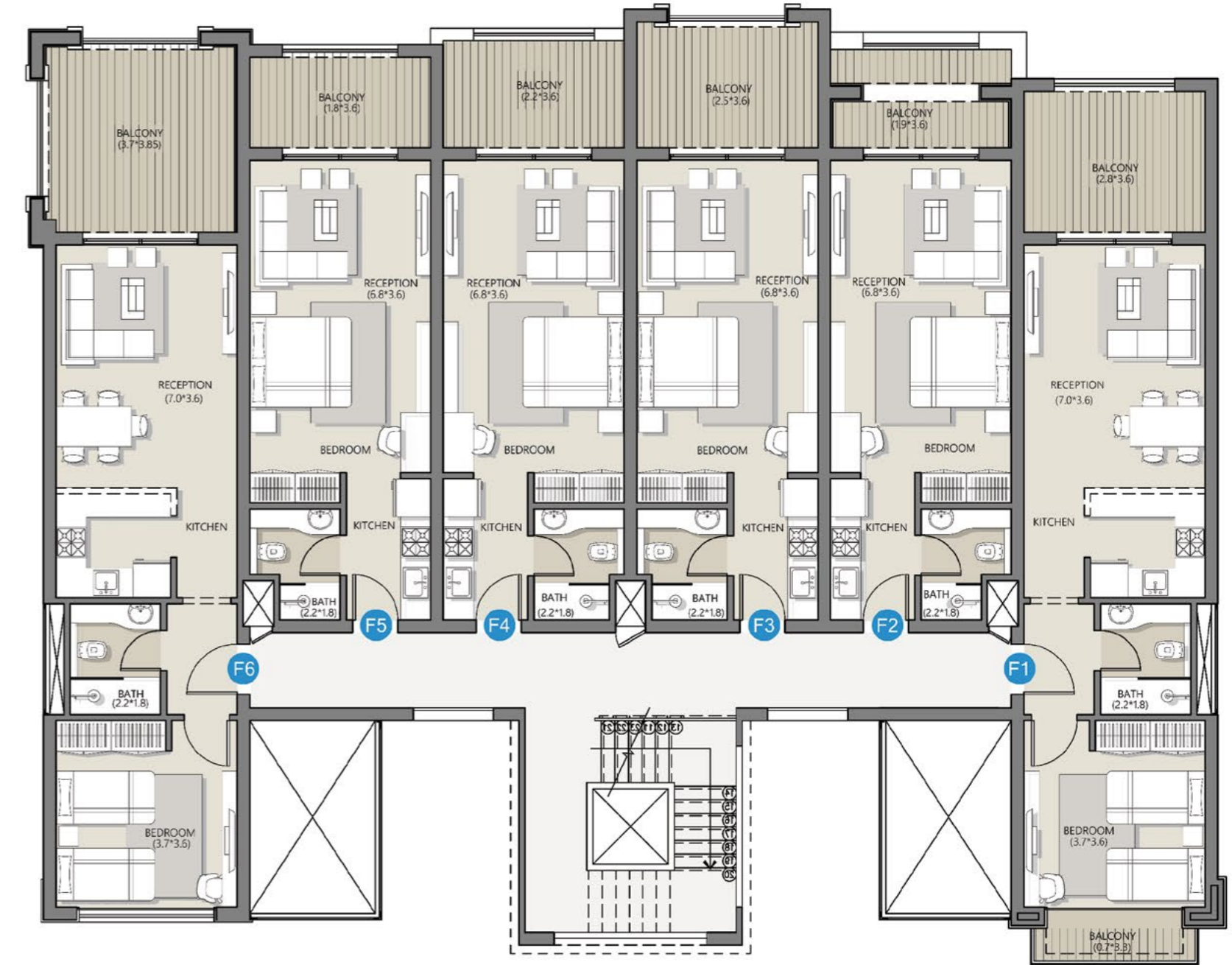
**Unit F5 - Studio**  
**Area: 55.4 m<sup>2</sup>**

**Unit F6 - One Bedroom**  
**Area: 88.6 m<sup>2</sup>**



## DISCLAIMER

All render and visual materials are for illustrative purpose only. actual areas may vary from the stated figures. All dimensions are measured to structural elements. Capital Link reserved the right to make minor modifications without prior notice. Unit floor plan might be mirrored according to its location in the layout.



# Type Gm-Second floor

## Unit P1 - One bedroom

Area: 96.1 m<sup>2</sup>

Roof: 91.69 m<sup>2</sup>

## Unit S2 - Studio

Area: 51.7 m<sup>2</sup>

## Unit S3 - Studio

Area: 59.4 m<sup>2</sup>

## Unit S4 - Studio

Area: 50.5 m<sup>2</sup>

## Unit S5 - Studio

Area: 55.8 m<sup>2</sup>

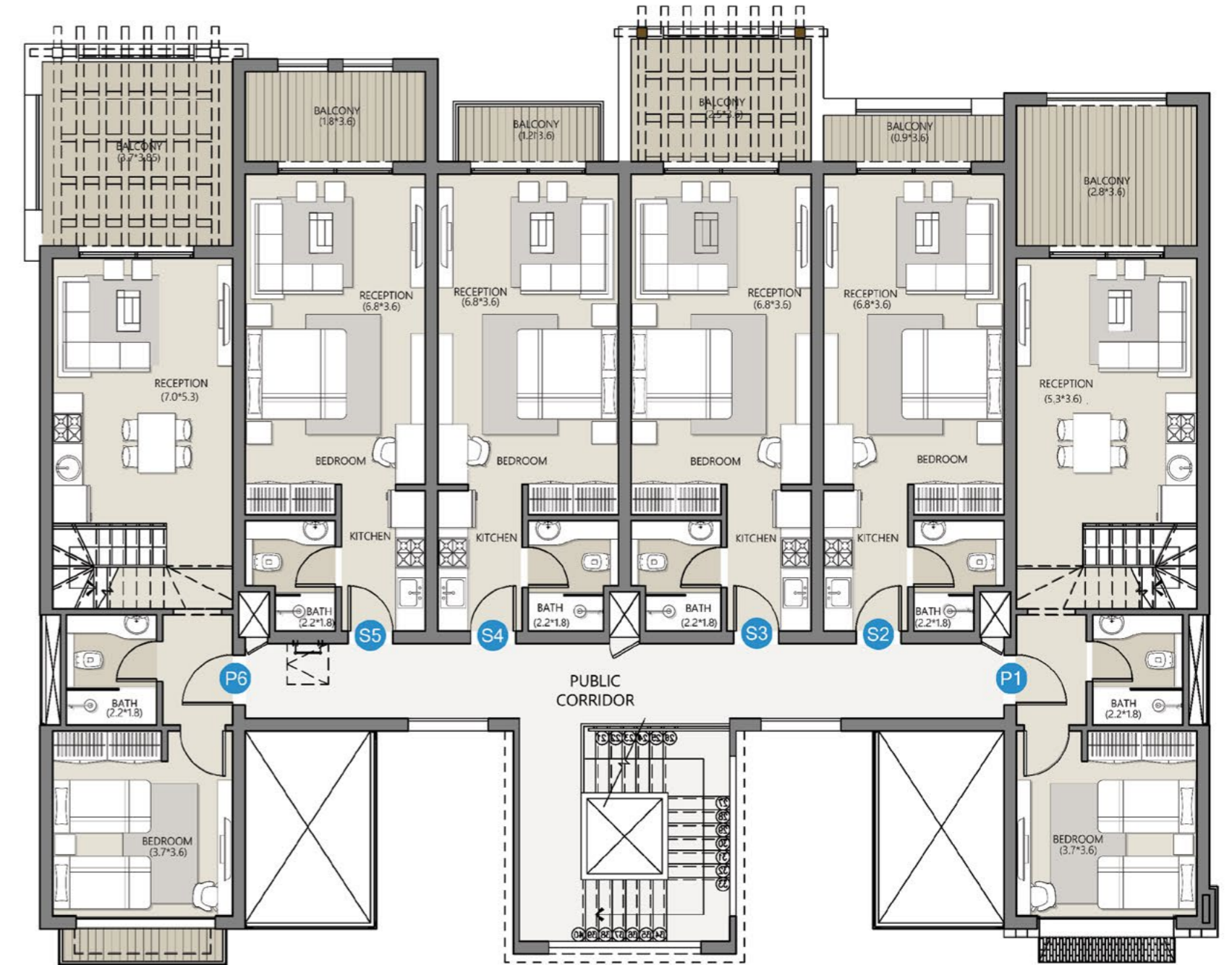
## Unit P6 - One bedroom

Area: 103.2 m<sup>2</sup>

Roof: 87.57 m<sup>2</sup>

### DISCLAIMER

All render and visual materials are for illustrative purpose only. actual areas may vary from the stated figures. All dimensions are measured to structural elements. Capital Link reserved the right to make minor modifications without prior notice. Unit floor plan might be mirrored according to its location in the layout.



# Type Gm- Roof floor

## Type Gm- Summary

**No. of floors : 3**

- Ground Floor
- First Floor
- second Floor

**No. of units: 6 per floor**

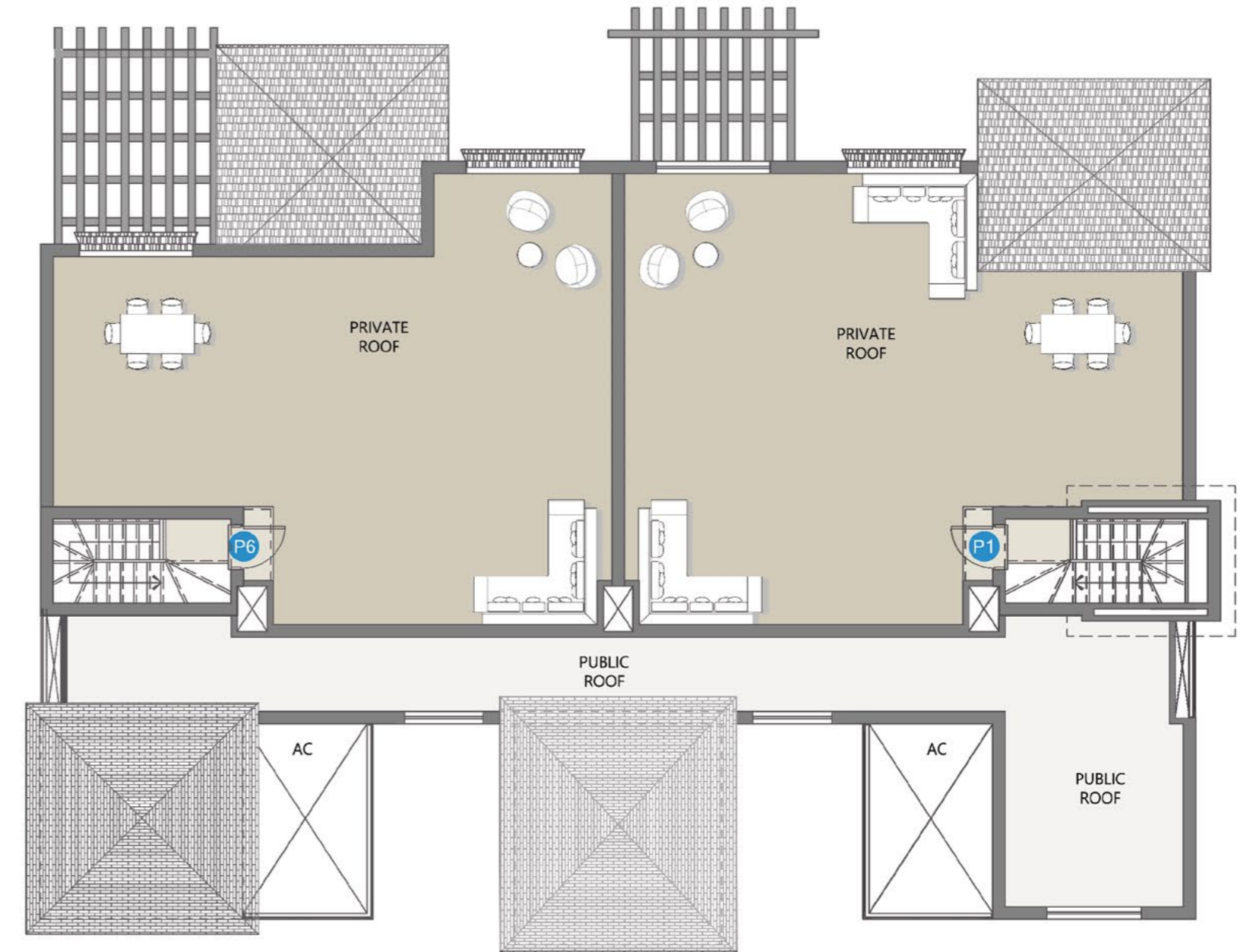
**Unit type: Studio & One bedroom**

**Unit area: 50 m<sup>2</sup> to 89 m<sup>2</sup>**

**Penthouse area: 96 m<sup>2</sup> to 103 m<sup>2</sup>**

### DISCLAIMER

All render and visual materials are for illustrative purpose only. actual areas may vary from the stated figures. All dimensions are measured to structural elements. Capital Link reserved the right to make minor modifications without prior notice. Unit floor plan might be mirrored according to its location in the layout.



*Developed By*



Established in 2020 by prestigious and reputable founders and partners, Capital Link Developments is committed to creating a durable bond between customers and the company.

Grown during a critical period challenging the real estate market in Egypt, the company has flourished, constructing diverse contemporary projects that capture people's aspirations and shape them into livable buildings.

Capital Link Developments caters to its clients every step of the way, from the moment they purchase their unit until the day they happily reside in it.

The company updates its strategic plans according to daily innovations and smart inventions, aiming to stay abreast of the present and add value to the future.

The people of Capital Link Developments are keen to offer a delightful experience to every person who chooses to trust the company.



Let's embrace *happiness* together

# *Our Success Partners*



OWNER



15642  
DEVELOPER



DESIGN  
CONSULTANT



MAIN  
CONSULTANT



MAIN  
CONTRACTOR





**CAPITAL  
LINK**  
DEVELOPMENTS